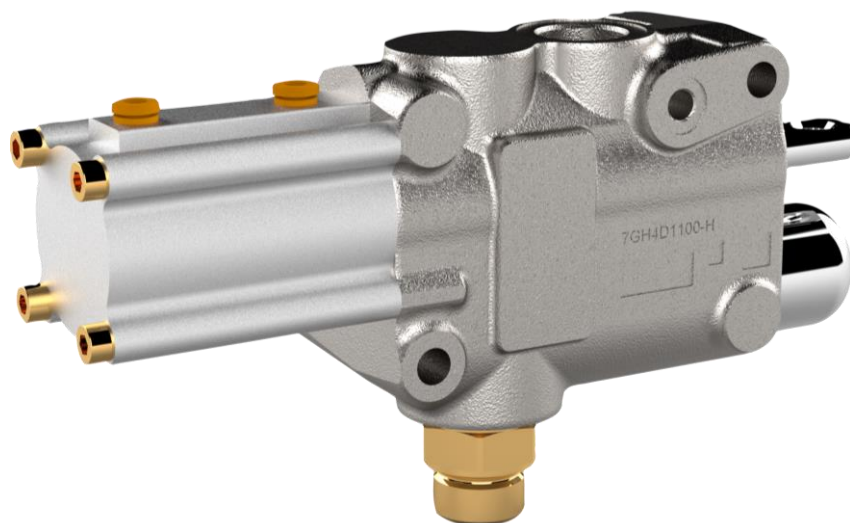


CV 130

ORDERING CODE

1992543100 - 170 bar

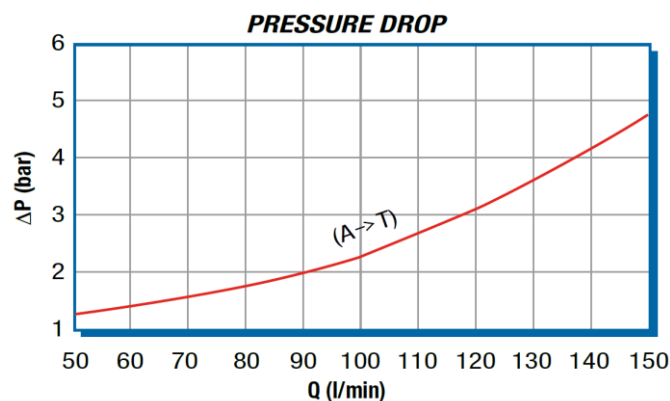
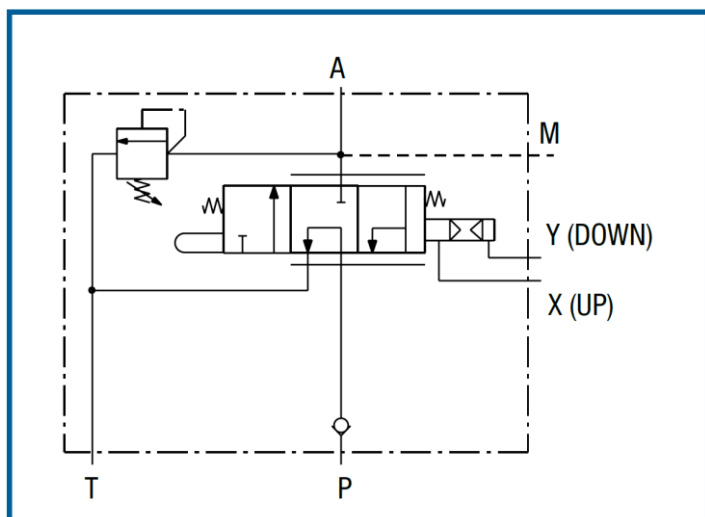
1992543133 - 130 bar



TECHNICAL SPECIFICATION

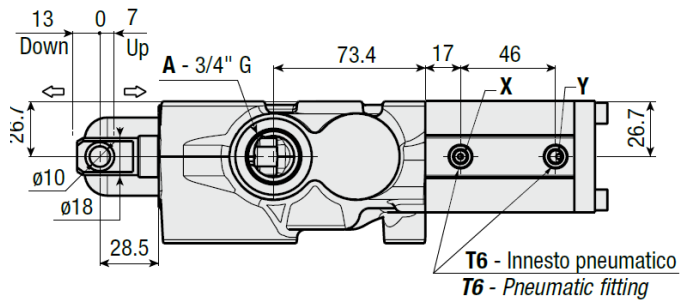
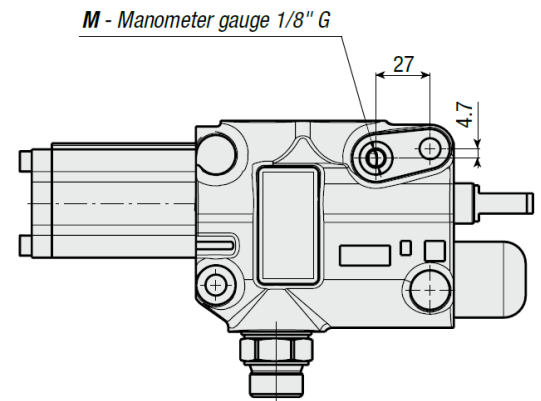
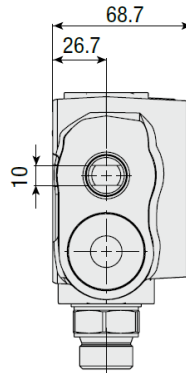
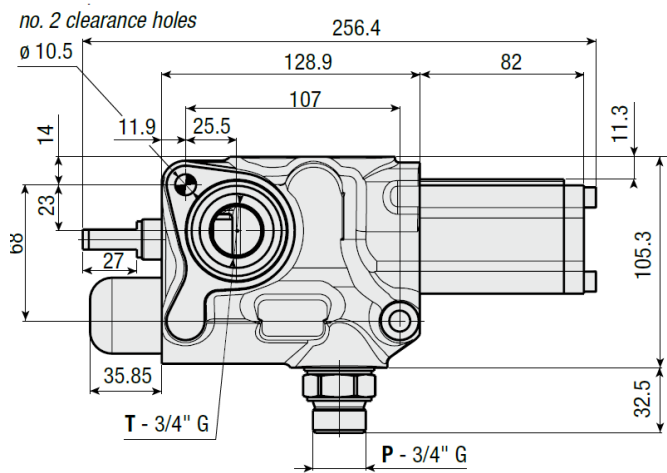
Flow rate	150 l/min	Fluid temperature	-25°+ 80°C
Max working pressure	250 bar	Viscosity range	12-100 cSt
Max peak pressure	350 bar	ISO 4406	20/17 25µm
T port max pressure	30 bar	Weight	5.1 kg
Max pneumatic pressure	10 bar	Mineral oil	ISO VG46

- Pneumatically operated 150 l/min distributor for tipper vehicles.
- It performs tipping, fast lowering and proportional lowering (by means of proportional pneumatic control).
- The inlet check valve and the adjustable relief valve are built-in.
- The relief valve range is from 130-220 bar.
- End-of-stroke rope.
- Tamper proof relief valve.



THE ABOVE SPECIFICATIONS REFER
TO OIL TYPE ISO VG 46 AT 50° C ($\nu = 30$ cSt)

DC VALVE (STANDARD VERSION)



EXAMPLE OF MOUNTING

