

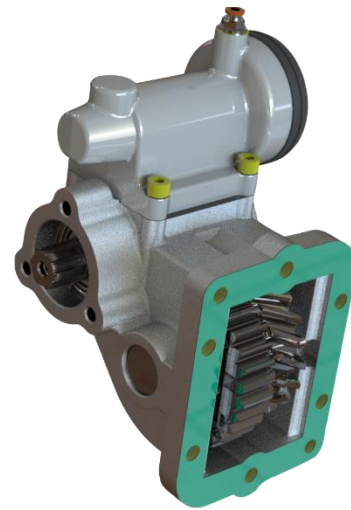
# G550

## ORDERING CODE

4299XXXXXX

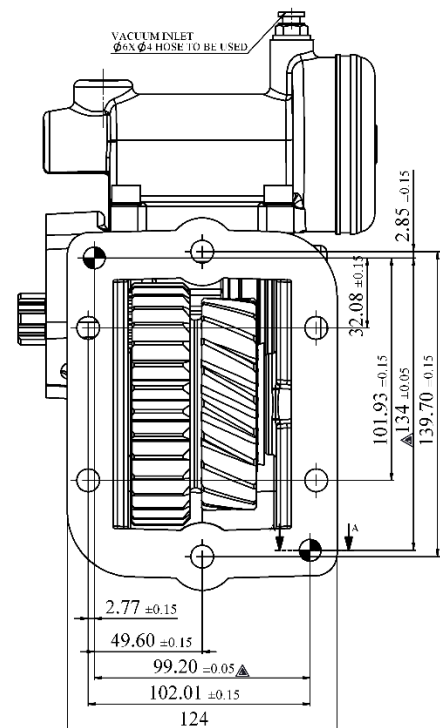
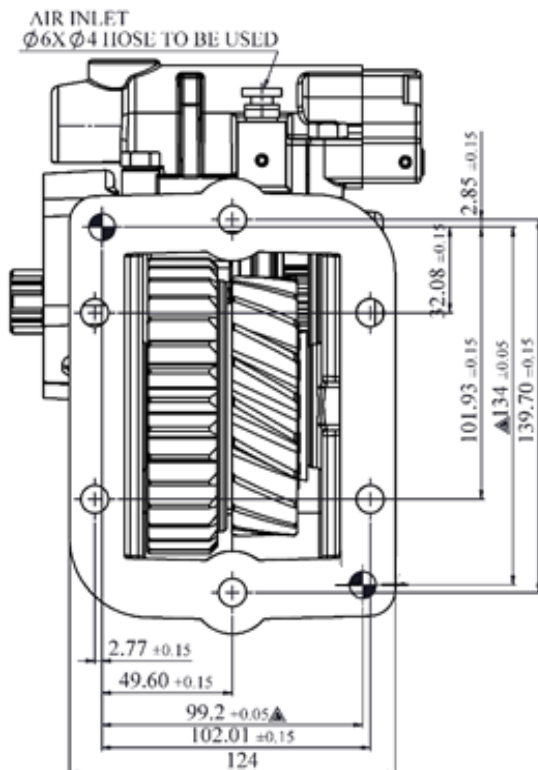
## APPLICATION

JETTING TRUCK, LIFTING PLAT FORM  
TRUCK MOUNTED CRANE  
TANKER, GARBAGE COMPACTOR  
BULKER, RECOVERY VEHICLE



## TECHNICAL SPECIFICATION

GEAR BOX TYPE	TATA G550
TORQUE	300 NM
ROTATION DIRECTION	ENGINE DIRECTION
ENGAGEMENT TYPE	PNEUMATIC/VACUUM
PTO O/P RATIO	0.6
WEIGHT	8.6 kg
DURATION OF OPERATION	30MIN (max)
OPTIONS	3bolt, 43,57,65CC
	SPICER 1300,DIN00



PTO WITH PUMP, PTO WITH FLANGE COMBINATION WILL BE SUPPLIED AS PER CUSTOMER REQUIREMENT

IPH reserves the right to modify the technical data mentioned into this catalogue without notice.  
The herewith mentioned data are not bounding.