

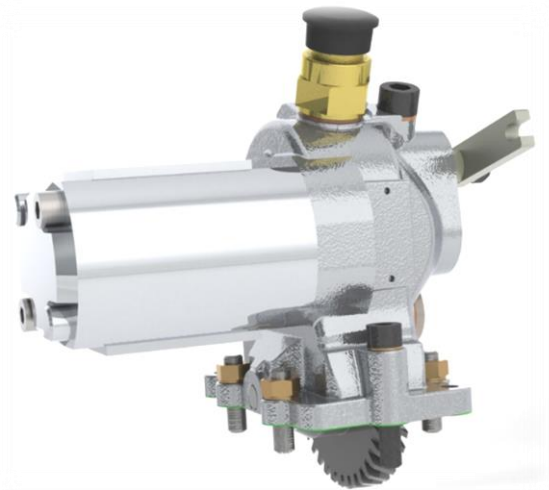
G65-4

ORDERING CODE

IPHTA02100

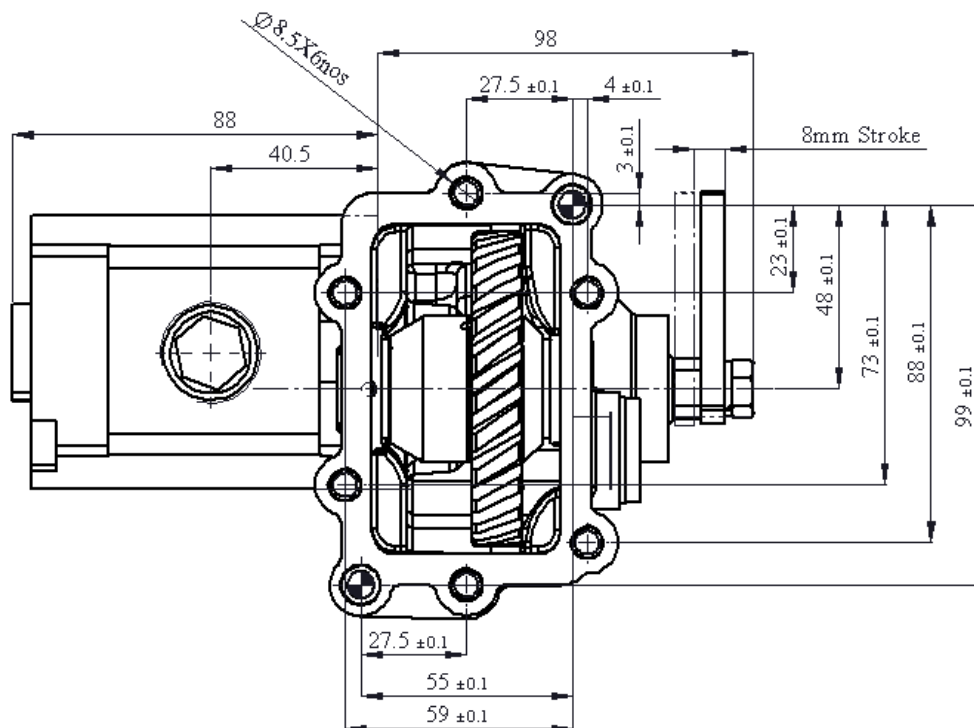
APPLICATION

TIPPER
WATE BOWSER
RECOVERY VEHICLE
LIFTING PLATFORM



TECHNICAL SPECIFICATION

GEAR BOX TYPE	G65-4 SPEED
TORQUE	40 NM
ROTATION DIRECTION	ENGINE DIRECTION
ENGAGEMENT TYPE	MANUAL
PTO O/P RATIO	1.32
WEIGHT	3Kg
DURATION OF OPERATION	30MIN (max)
PUMP CAPACITY	5CC
OPERATING PRESSURE	140bar



PTO WITH PUMP, PTO WITH FLANGE COMBINATION WILL BE SUPPLIED AS PER CUSTOMER REQUIREMENT

IPH reserves the right to modify the technical data mentioned into this catalogue without notice.
The herewith mentioned data are not bounding.